

Intricate Cross Stitch

<http://www.intricatecrossstitch.com>

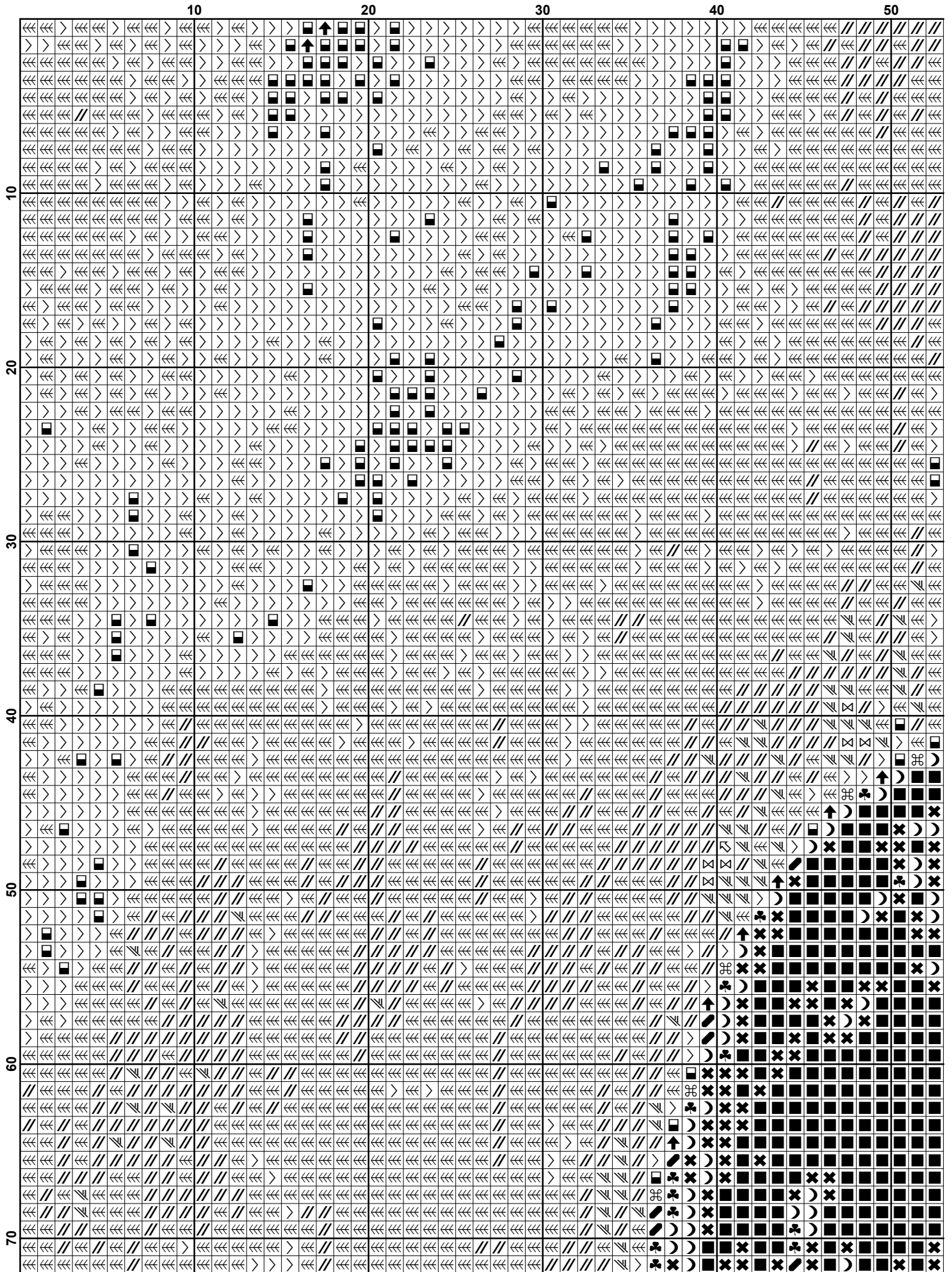
Amy Winehouse

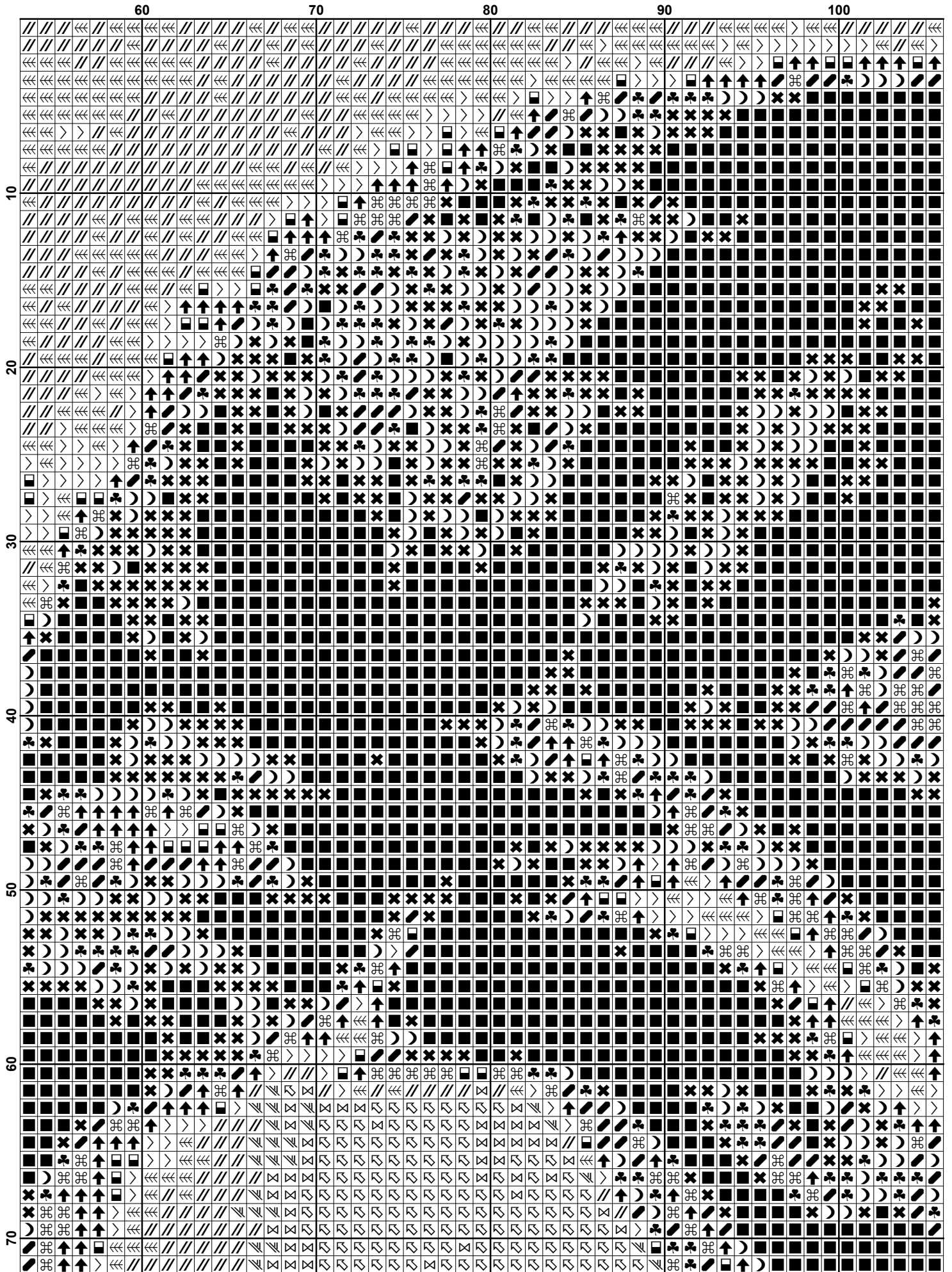


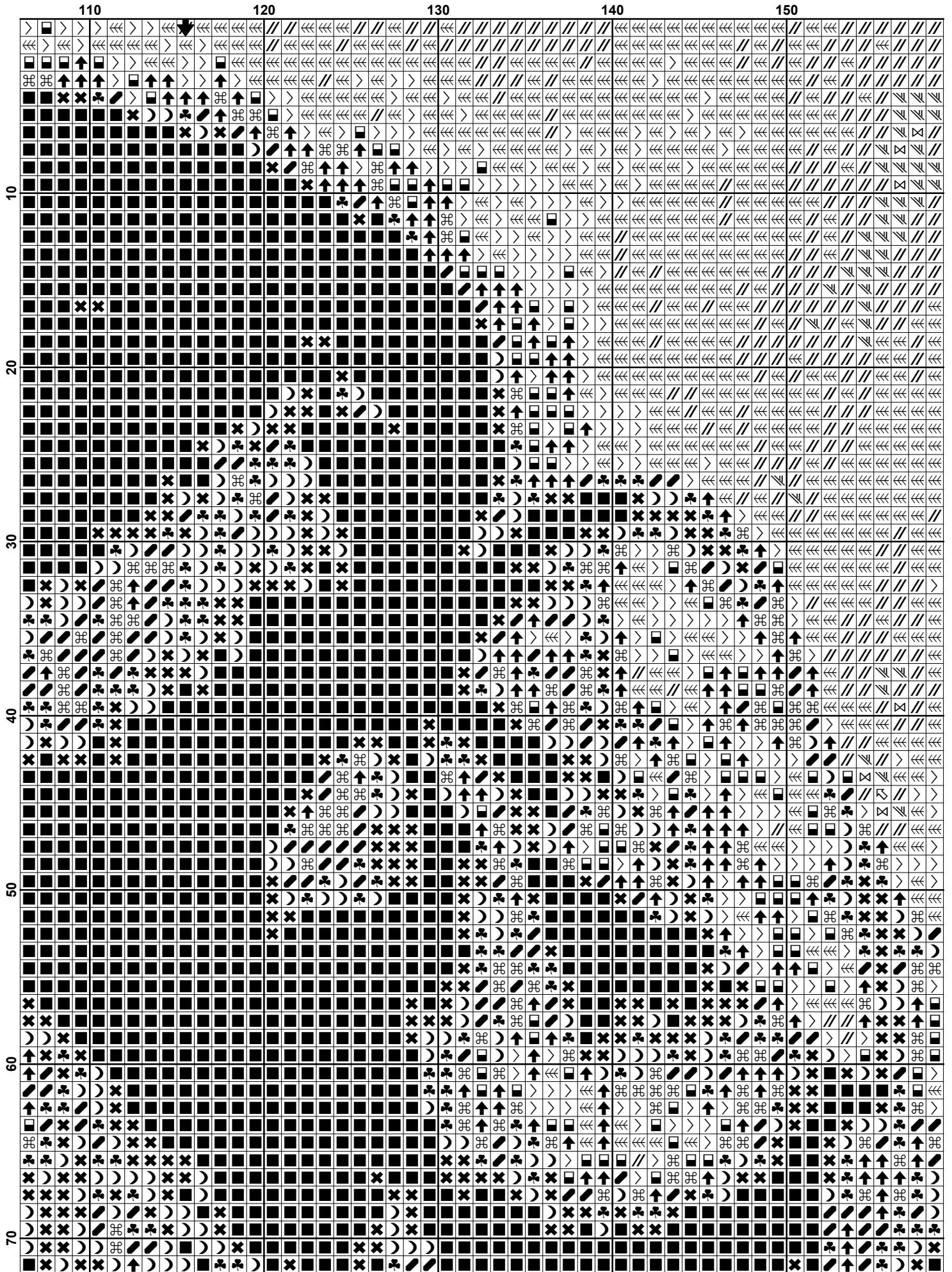
Intricate Cross Stitch ©

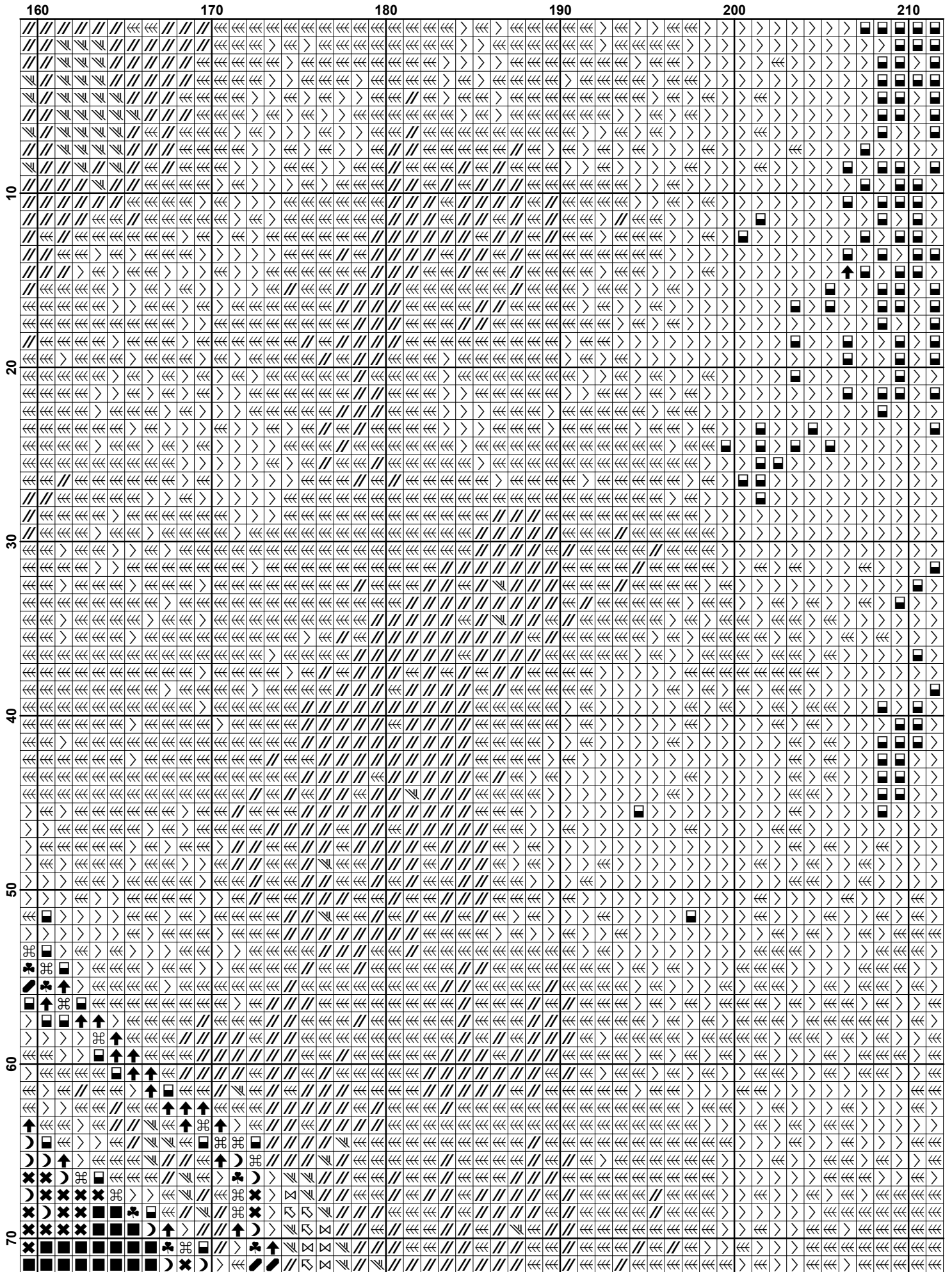
This cross stitch pattern is for personal use only.

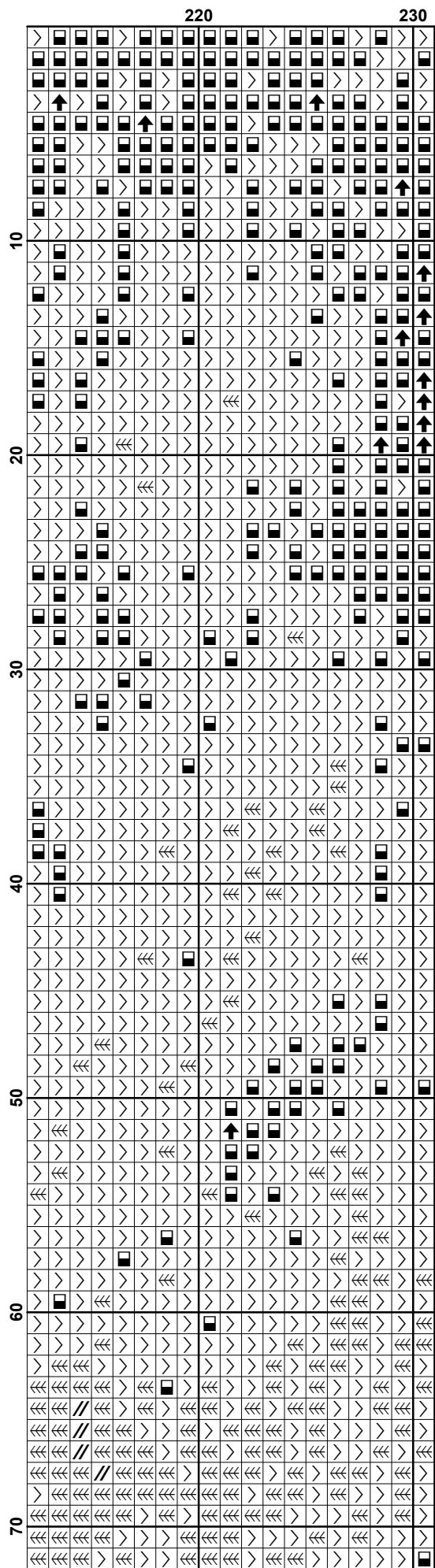
<http://www.intricatecrossstitch.com>

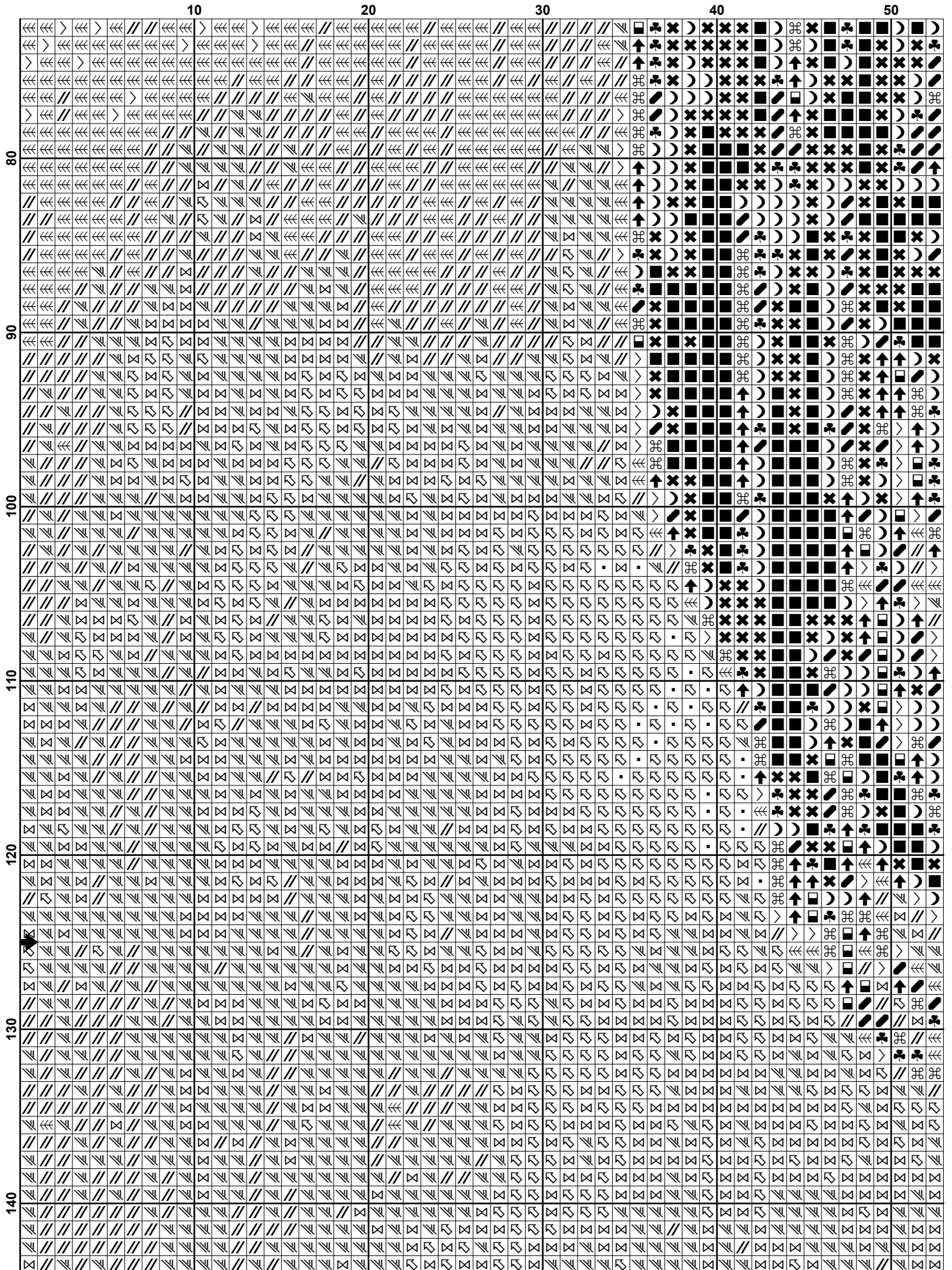


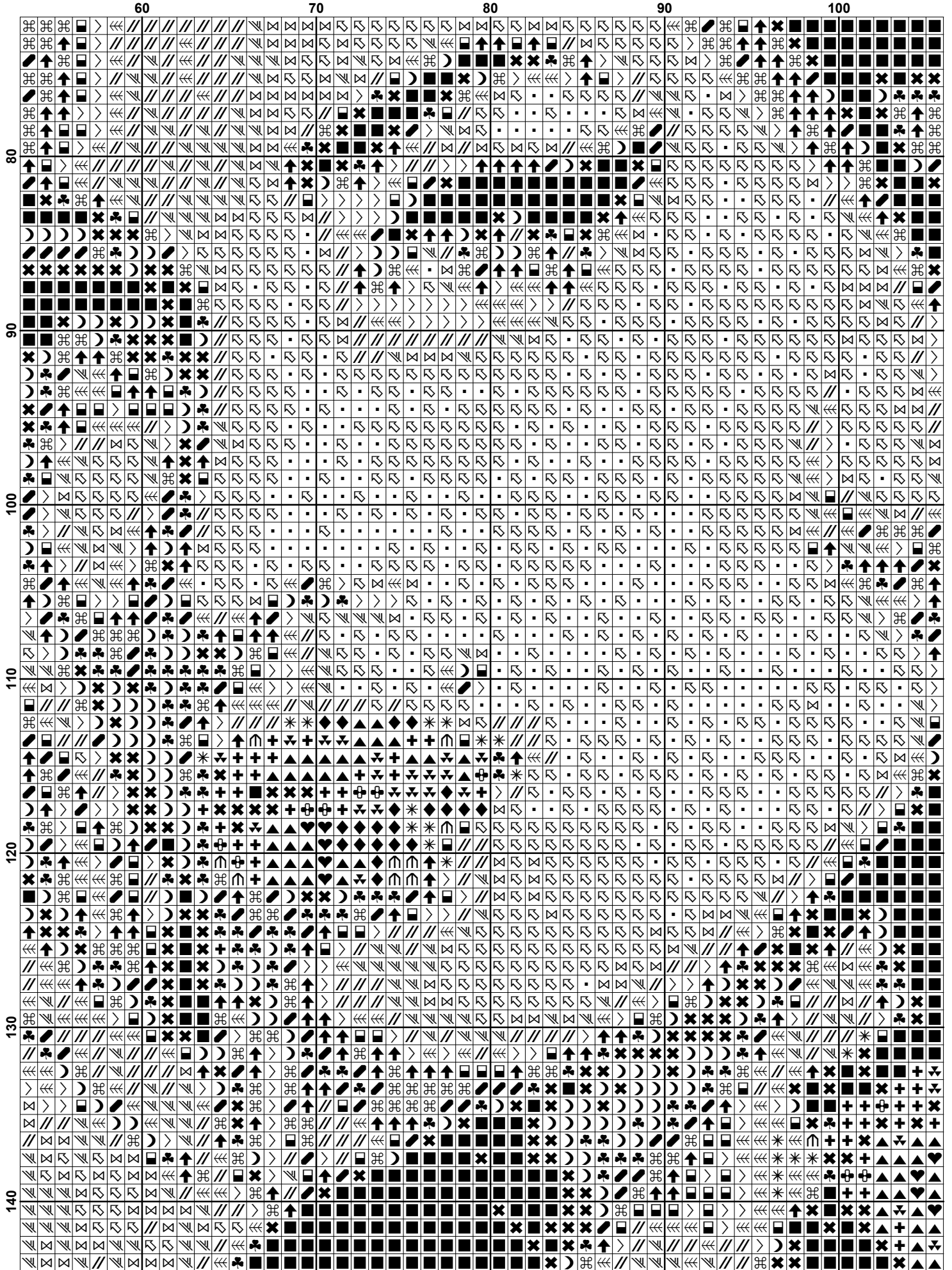


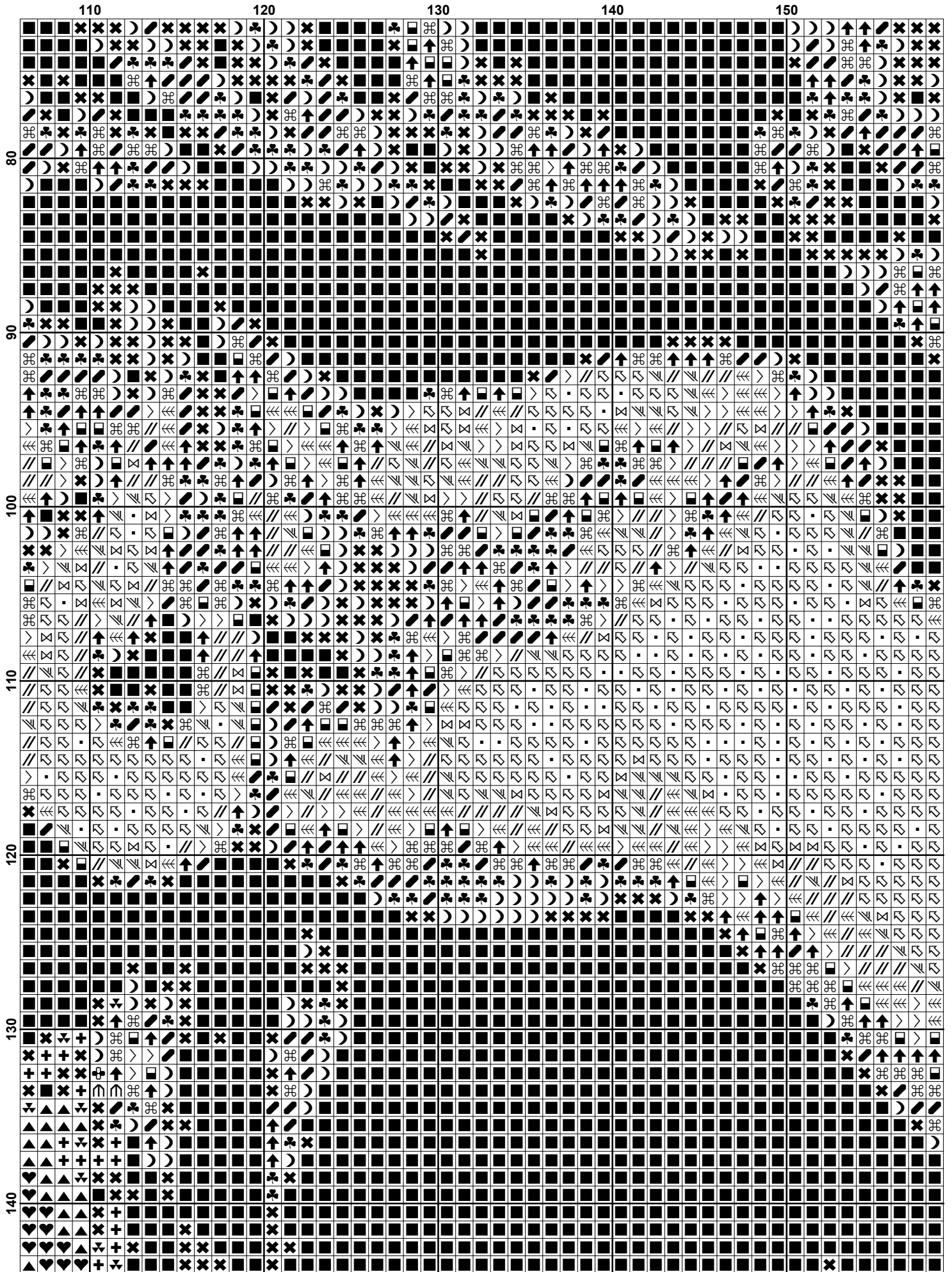


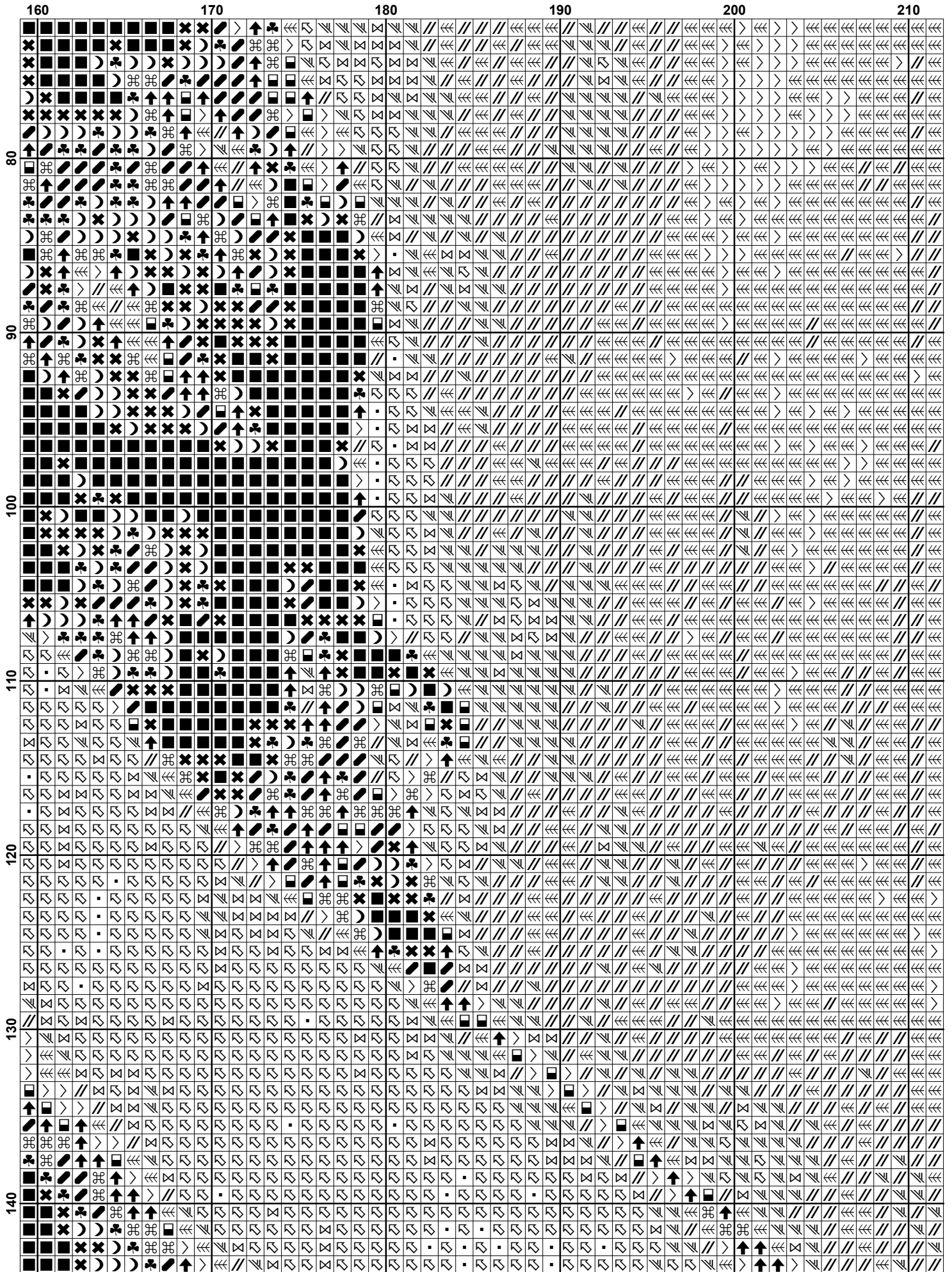


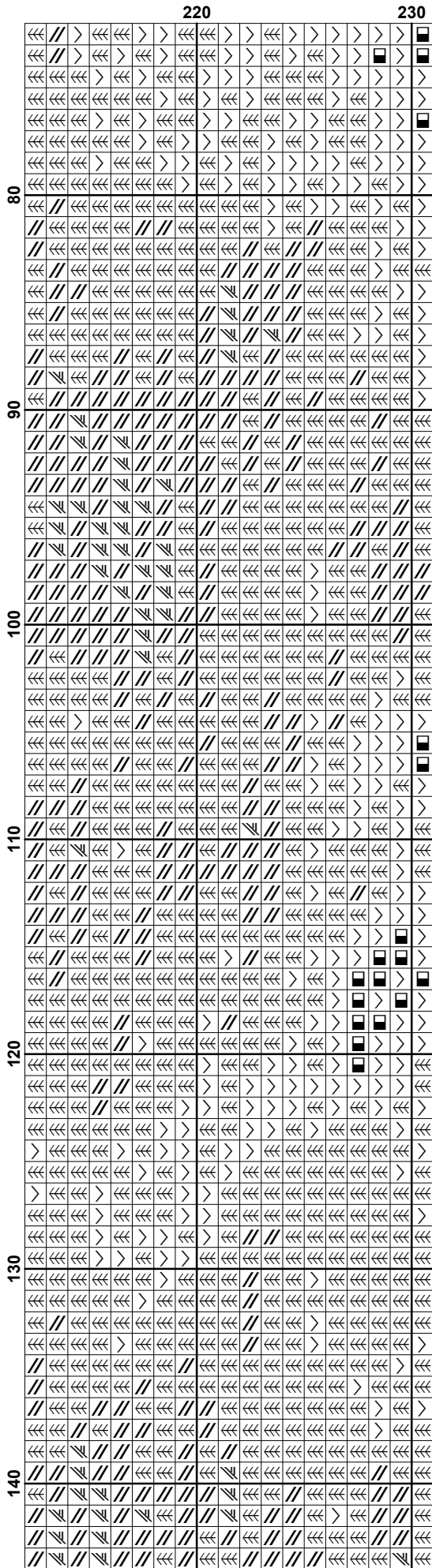


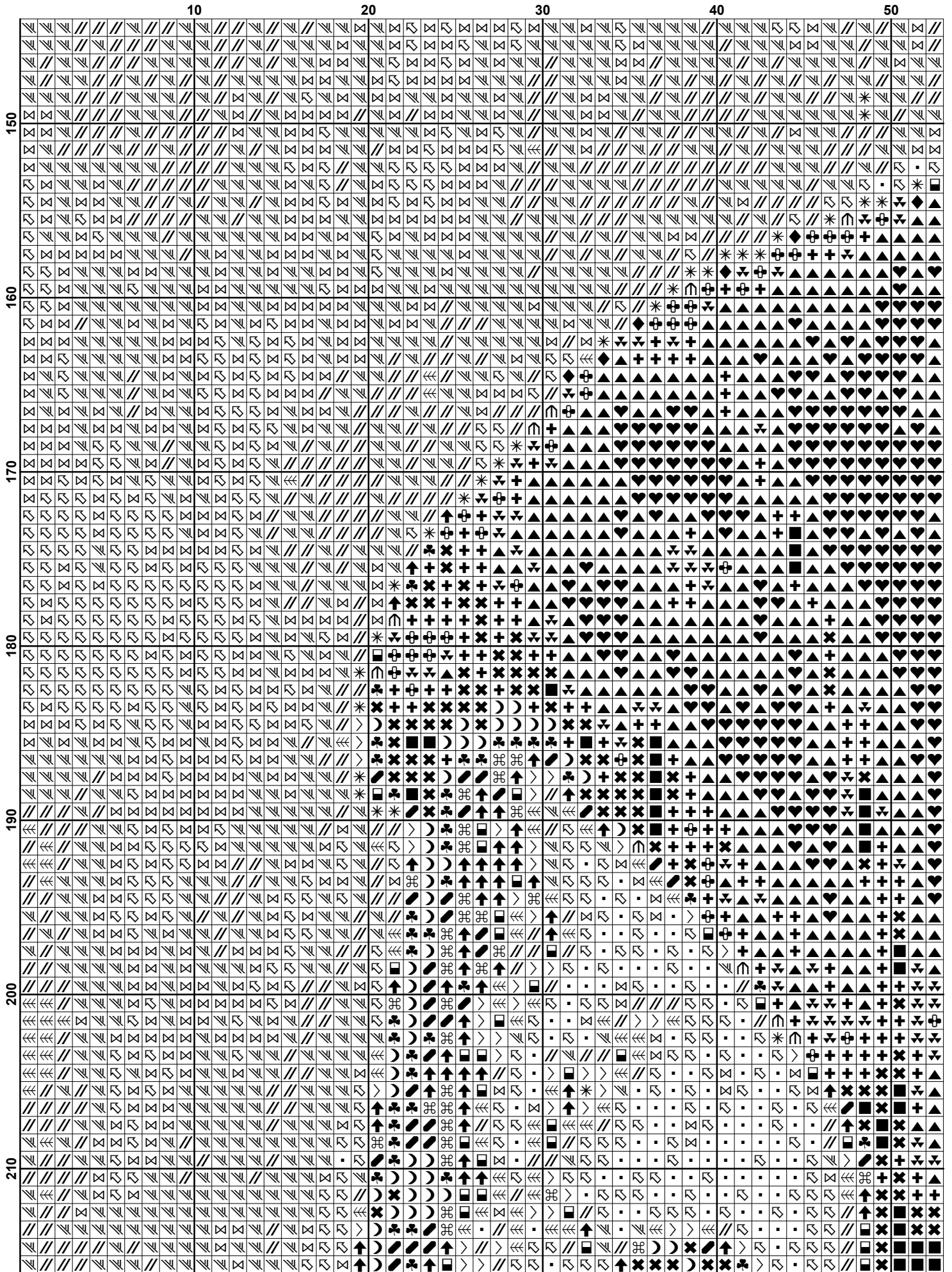




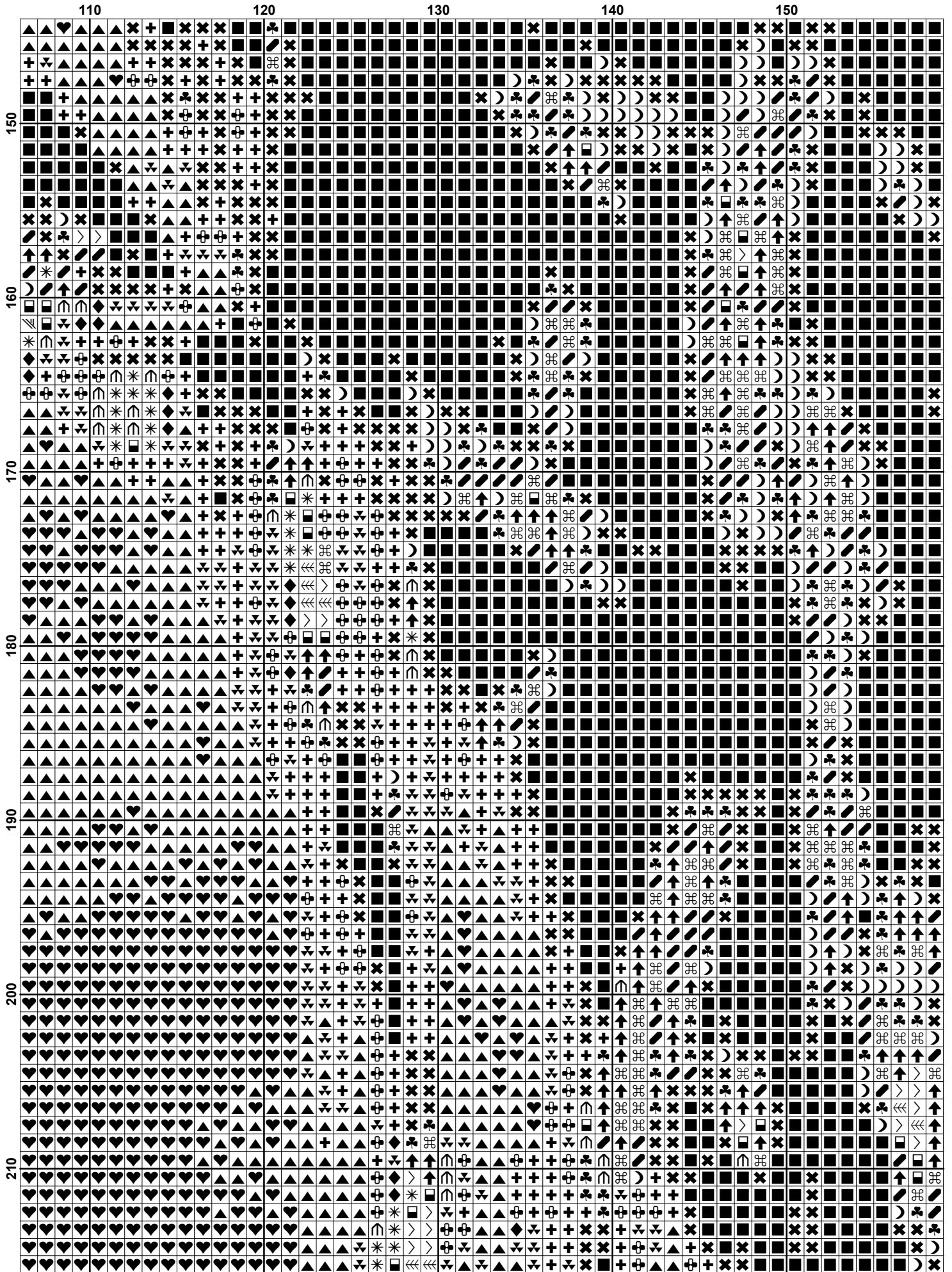


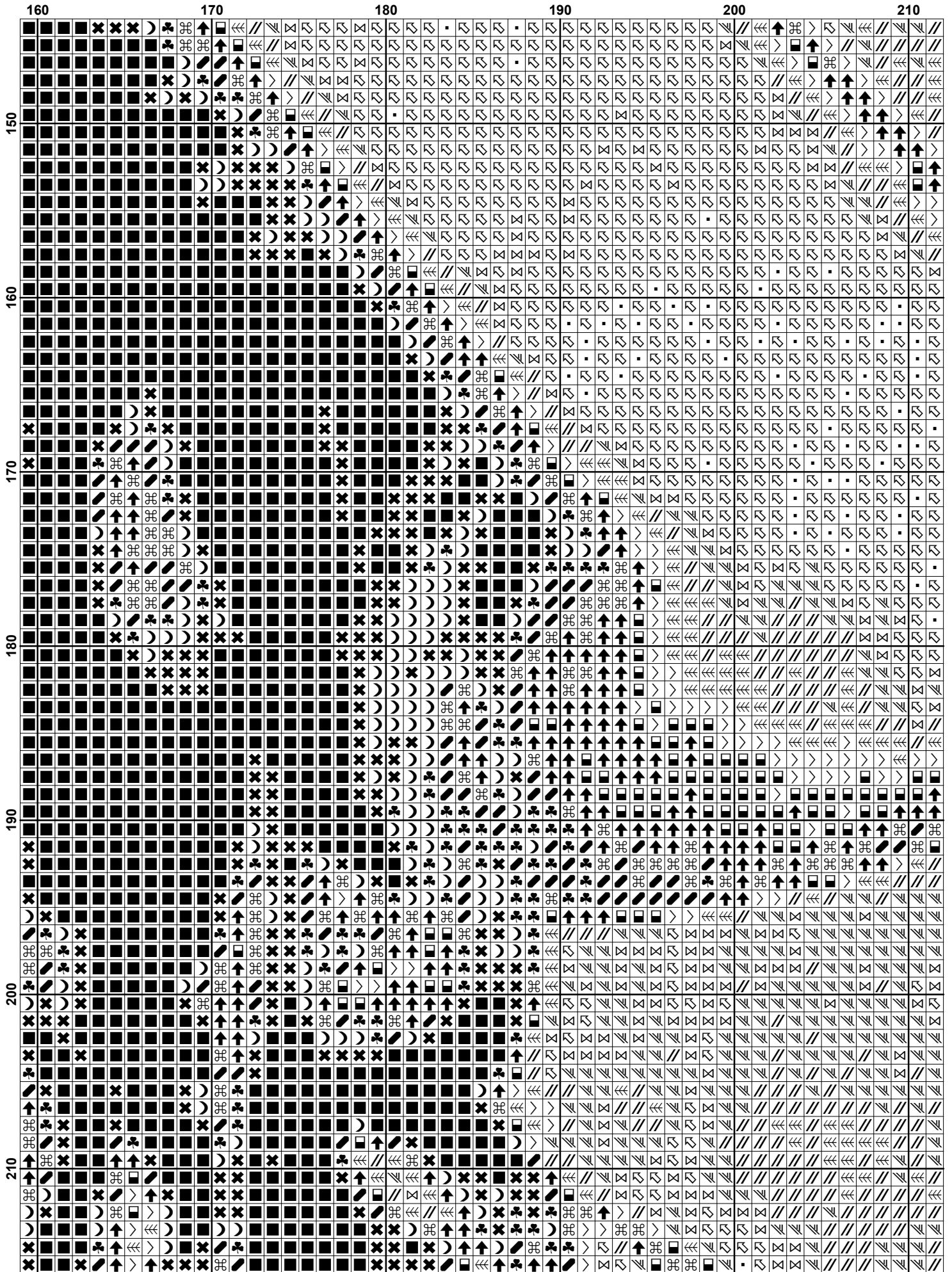


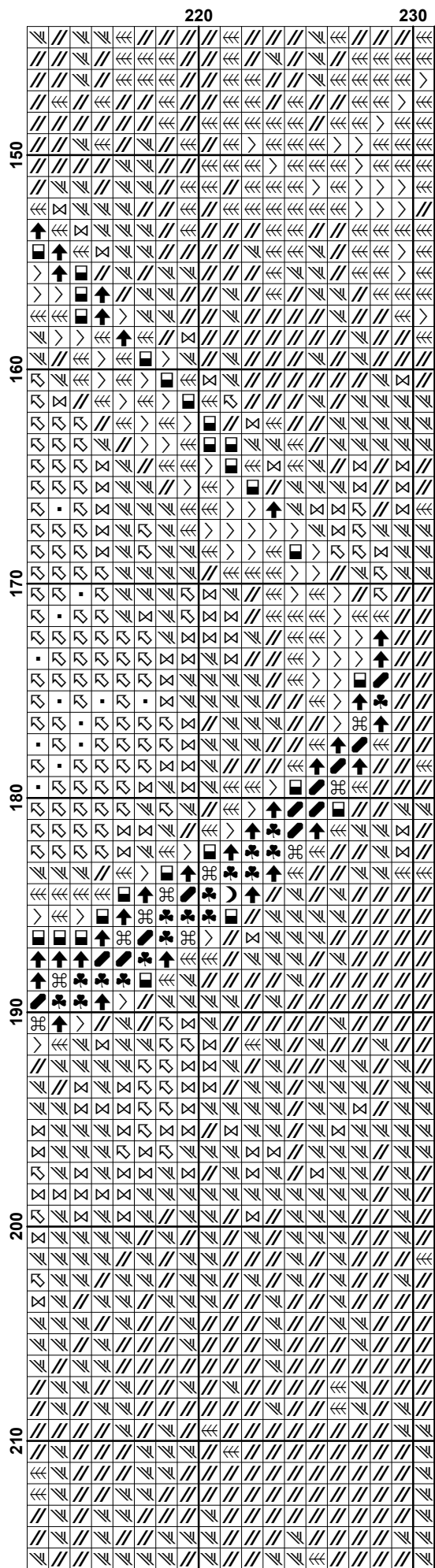


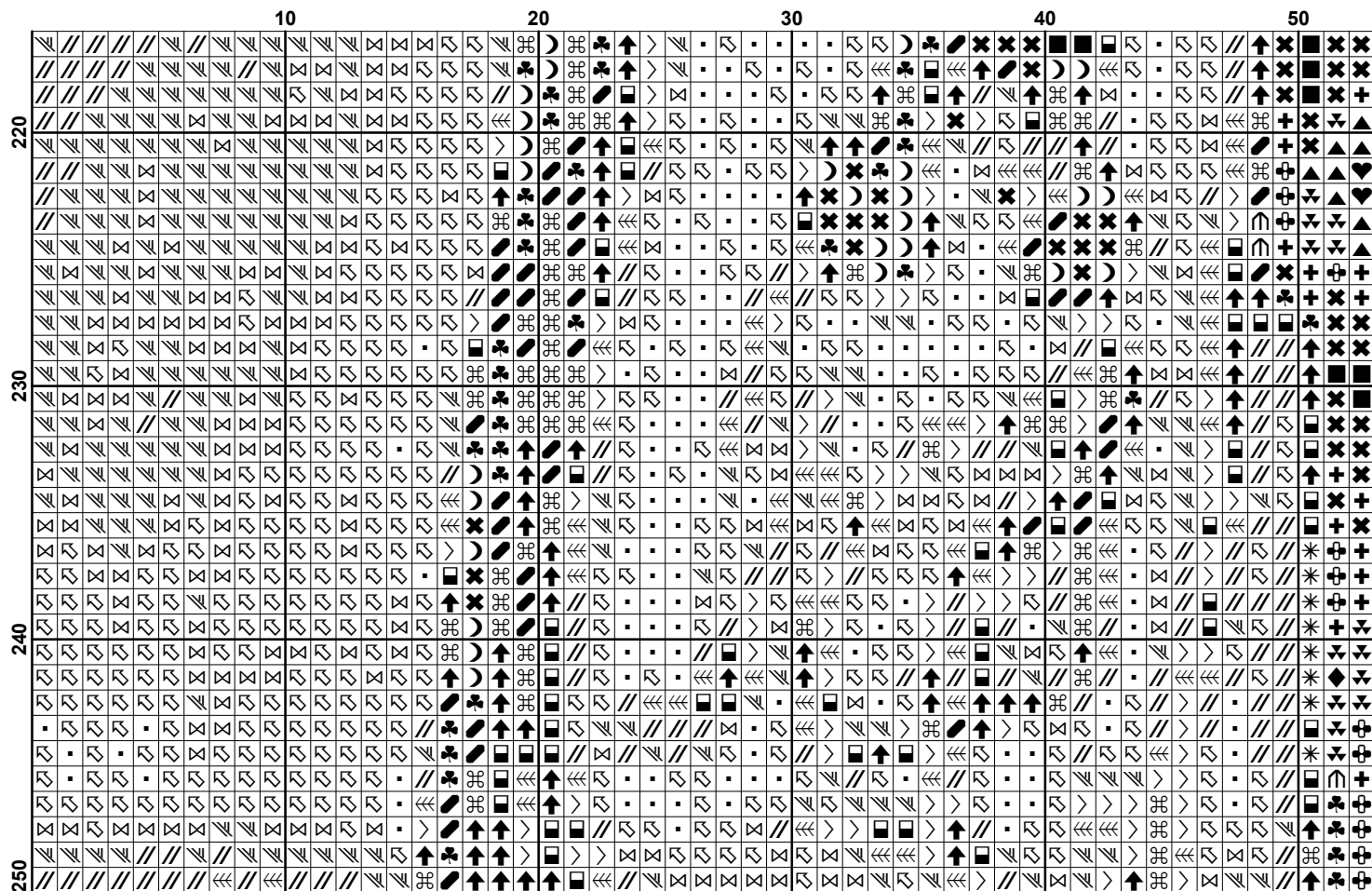


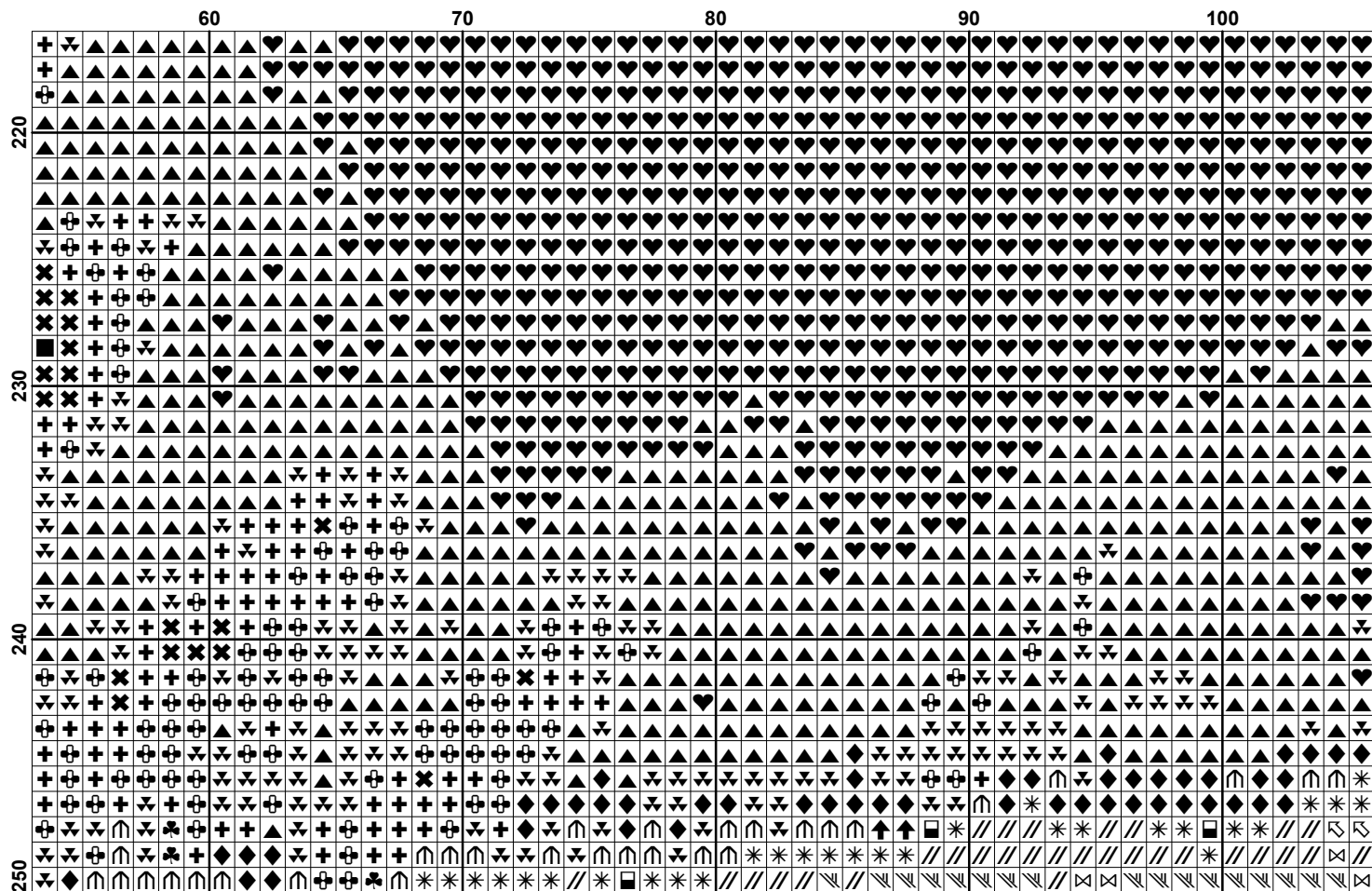


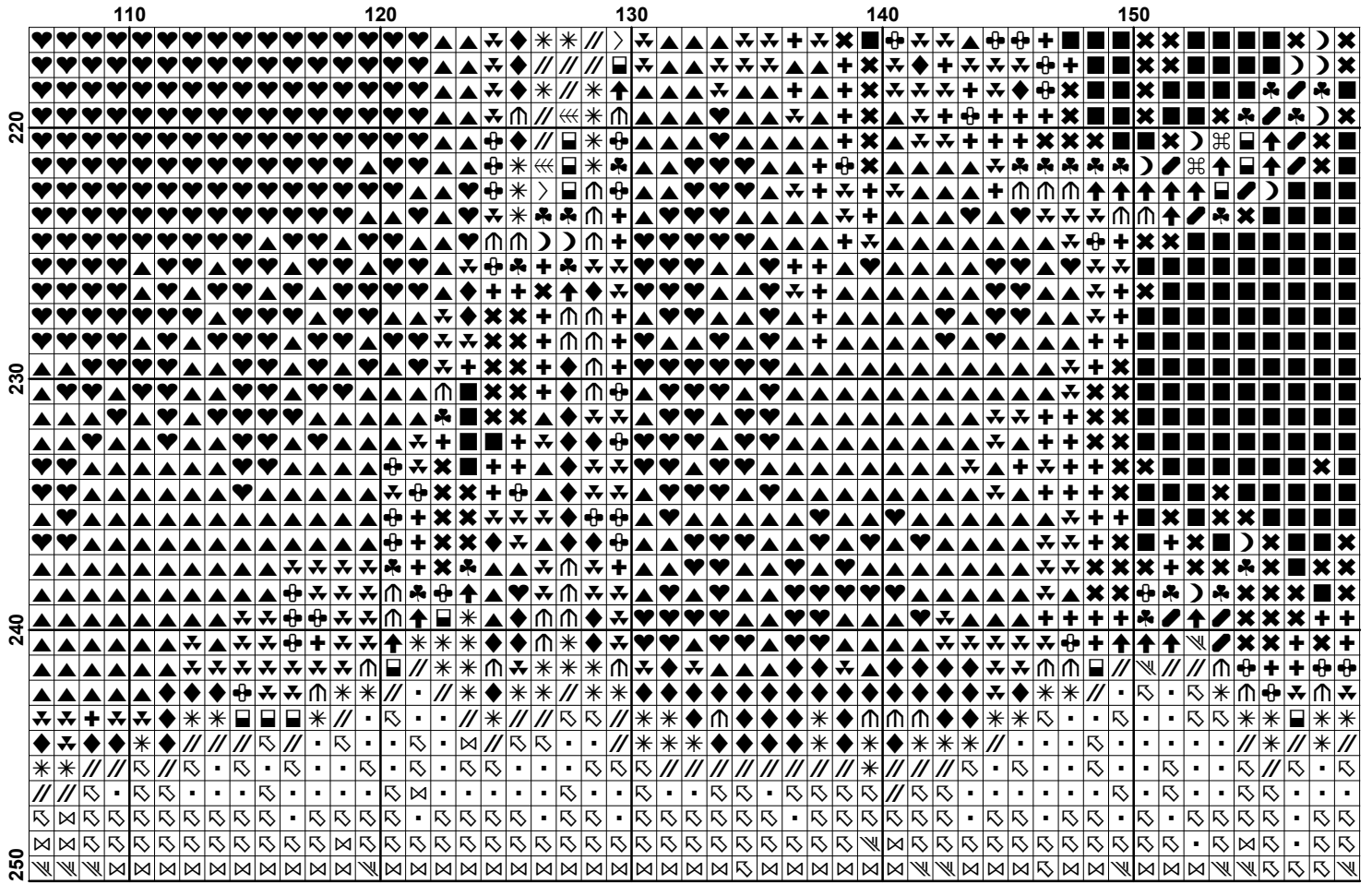


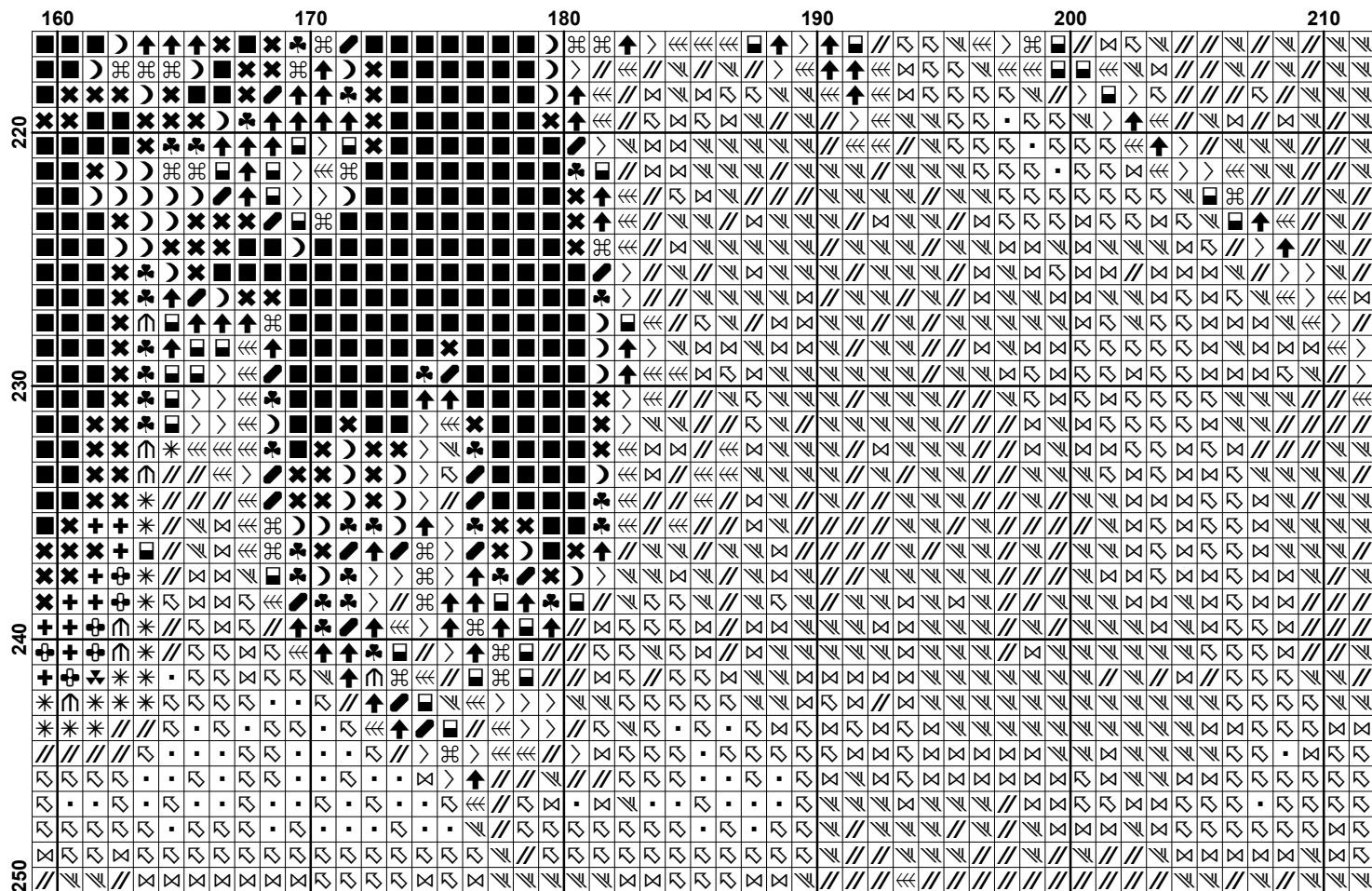


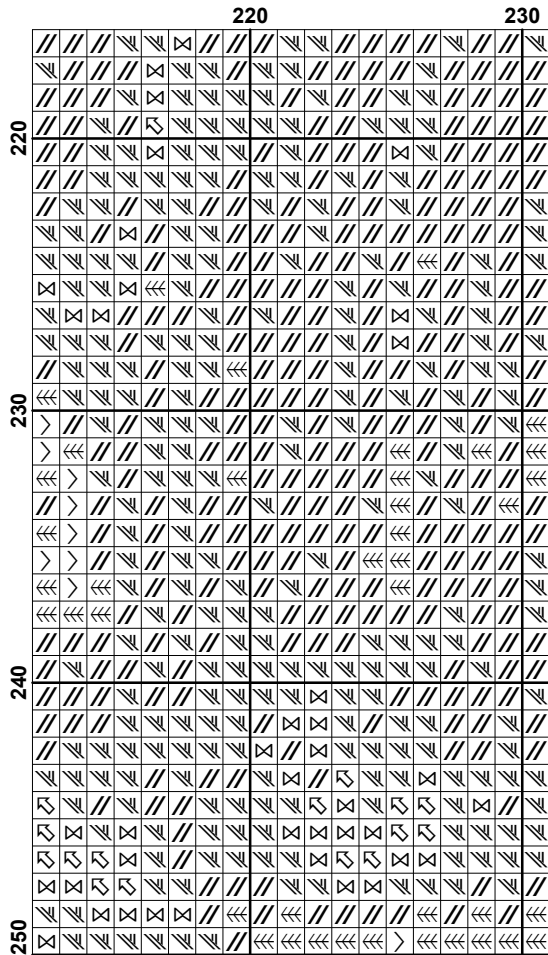












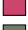



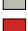


















Pattern Name: Amy Winehouse
Designed By: Intricate Cross Stitch
Company: intricatecrossstitch.com
Copyright: Intricate Cross Stitch
Fabric: Aida 14, White
 231w X 250h Stitches
Size(s): 14 Count, 16-1/2w X 17-3/4h in
 16 Count, 14-3/8w X 15-5/8h in
 18 Count, 12-3/4w X 13-7/8h in
 22 Count, 10-1/2w X 11-1/4h in

Floss Used for Full Stitches:

Symbol	Strands	Type	Number	Color
 *	2	DMC	152	Shell Pink-MD LT
 ■	2	DMC	310	Black
 ▲	2	DMC	321	Christmas Red
 ▼	2	DMC	326	Rose-VY DK
 //	2	DMC	453	Shell Gray-LT
 /	2	DMC	535	Ash Gray-VY LT
 ◆	2	DMC	601	Cranberry-DK
 ⌘	2	DMC	645	Beaver Gray-VY DK
 ↑	2	DMC	646	Beaver Gray-DK
 >	2	DMC	647	Beaver Gray-MD
 ≡	2	DMC	648	Beaver Gray-LT
 ♥	2	DMC	666	Christmas Red-BRT
 ⦿	2	DMC	777	Raspberry-VY DK
 +	2	DMC	814	Garnet-DK
 ⊗	2	DMC	822	Beige Gray-LT
 ♣	2	DMC	844	Beaver Brown-UL DK
 □	2	DMC	3022	Brown Gray-MD
 ≡	2	DMC	3033	Mocha Brown-VY LT
 ✕	2	DMC	3371	Black Brown
 ↗	2	DMC	3722	Shell Pink-MD
)	2	DMC	3799	Pewter Gray-VY DK
 ·	2	DMC	3865	Winter White
 ↻	2	DMC	Ecru	Ecru

Usage Summary

Strands Per Skein: 6
Skein Length: 313.0 in

Type	Number	Full	Half	Quarter	Petite	Back(in)	Str(in)	Spec(in)	French	Bead	Skein Est.
DMC 152	217	0	0	0	0	0.0	0.0	0.0	0	0	1.000
DMC 310	8261	0	0	0	0	0.0	0.0	0.0	0	0	4.000
DMC 321	2480	0	0	0	0	0.0	0.0	0.0	0	0	2.000
DMC 326	638	0	0	0	0	0.0	0.0	0.0	0	0	1.000
DMC 453	5434	0	0	0	0	0.0	0.0	0.0	0	0	3.000
DMC 535	1165	0	0	0	0	0.0	0.0	0.0	0	0	1.000
DMC 601	199	0	0	0	0	0.0	0.0	0.0	0	0	1.000
DMC 645	1128	0	0	0	0	0.0	0.0	0.0	0	0	1.000
DMC 646	1455	0	0	0	0	0.0	0.0	0.0	0	0	1.000
DMC 647	4702	0	0	0	0	0.0	0.0	0.0	0	0	3.000
DMC 648	7319	0	0	0	0	0.0	0.0	0.0	0	0	4.000
DMC 666	3505	0	0	0	0	0.0	0.0	0.0	0	0	2.000
DMC 777	333	0	0	0	0	0.0	0.0	0.0	0	0	1.000
DMC 814	879	0	0	0	0	0.0	0.0	0.0	0	0	1.000
DMC 822	2380	0	0	0	0	0.0	0.0	0.0	0	0	2.000
DMC 844	1264	0	0	0	0	0.0	0.0	0.0	0	0	1.000
DMC 3022	1377	0	0	0	0	0.0	0.0	0.0	0	0	1.000
DMC 3033	4153	0	0	0	0	0.0	0.0	0.0	0	0	2.000
DMC 3371	3015	0	0	0	0	0.0	0.0	0.0	0	0	2.000
DMC 3722	133	0	0	0	0	0.0	0.0	0.0	0	0	1.000
DMC 3799	1698	0	0	0	0	0.0	0.0	0.0	0	0	1.000
DMC 3865	1125	0	0	0	0	0.0	0.0	0.0	0	0	1.000
DMC Ecru	4890	0	0	0	0	0.0	0.0	0.0	0	0	3.000