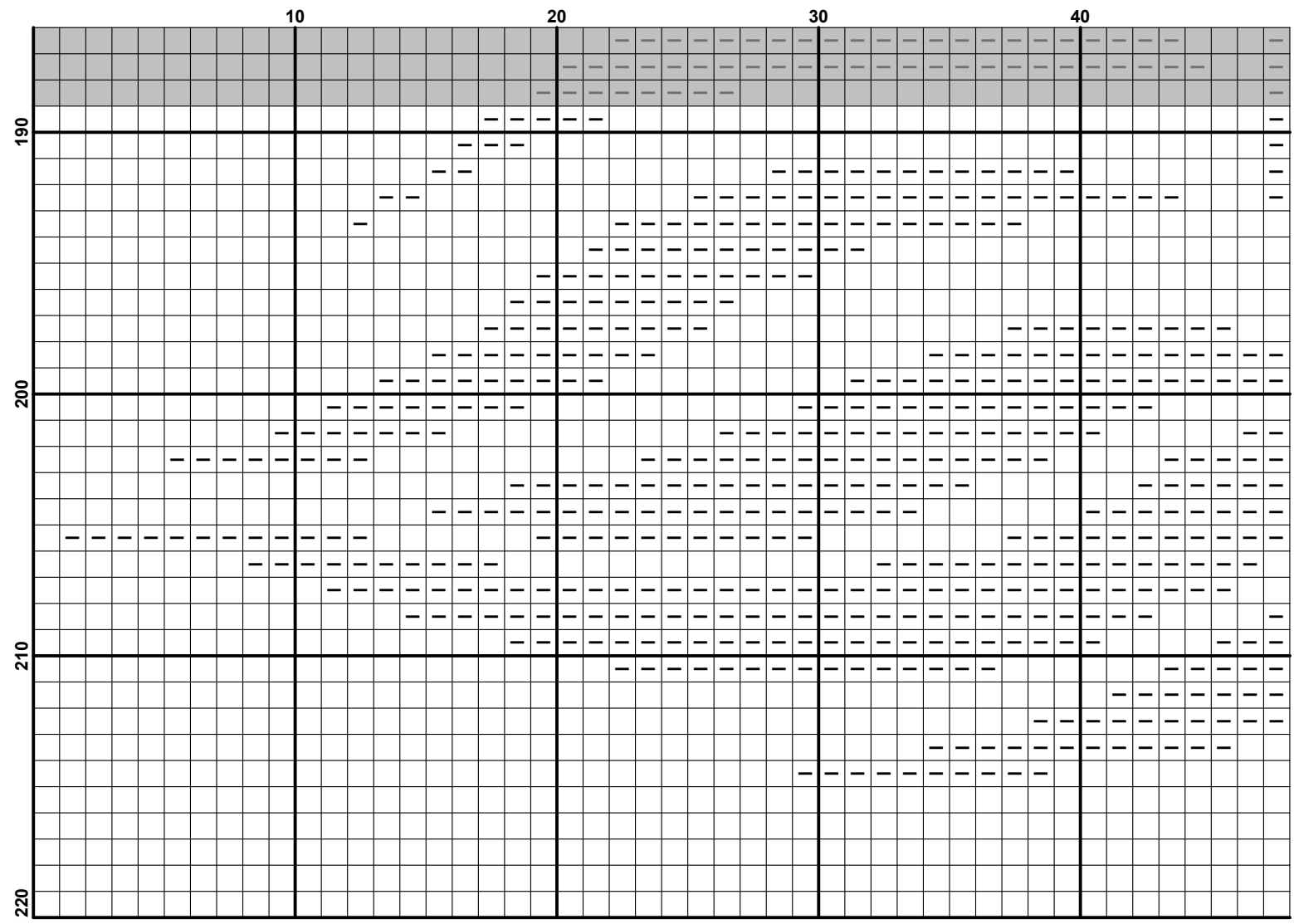
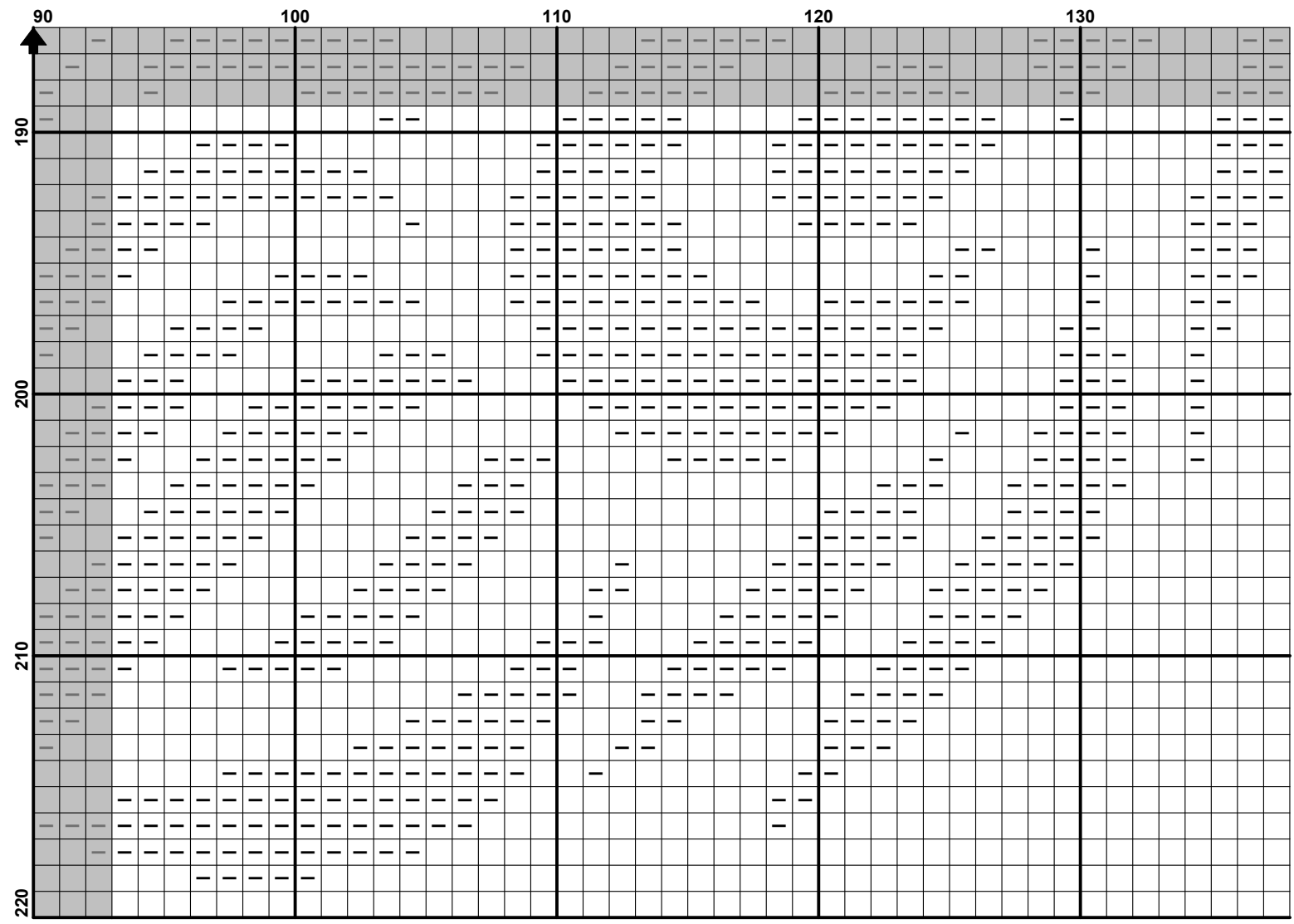


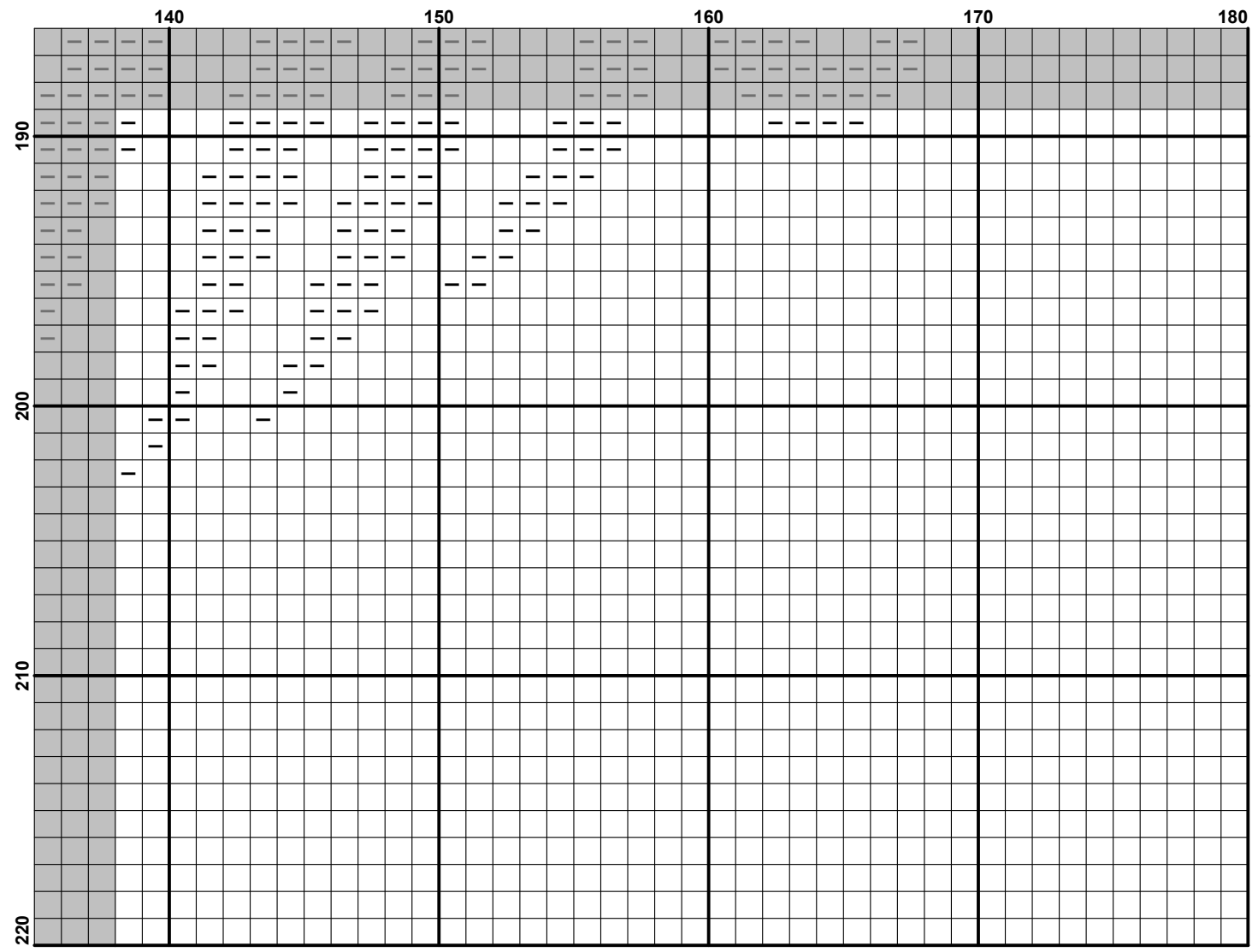
	140	150	160	170	180
130	...	...	...	...	...
140	...	...	...	...	...
150	...	...	...	...	...
160	...	...	...	...	...
170	...	...	...	...	...
180	...	...	...	...	...











**Fabric:** Aida 18, White  
179w X 219h Stitches  
**Size:** 18 Count, 25.26w X 30.90h cm

**Floss Used for Full Stitches:**

Symbol	Strands	Type	Number	Color
■ -	2	DMC	black	Sharon mohair

**Floss Used for Back Stitches:**

Symbol	Strands	Type	Number	Color
■ —	1	DMC	black	Sharon mohair

**Usage Summary**

**Strands Per Skein:** 6  
**Skein Length:** 795.0 cm

Type	Number	Full	Half	Quarter	Petite	Back(cm)	Str(cm)	Spec(cm)	French	Bead	Skein Est.
■ DMC	black	8211	0	0	0	2.0	0.0	0.0	0	0	3.000